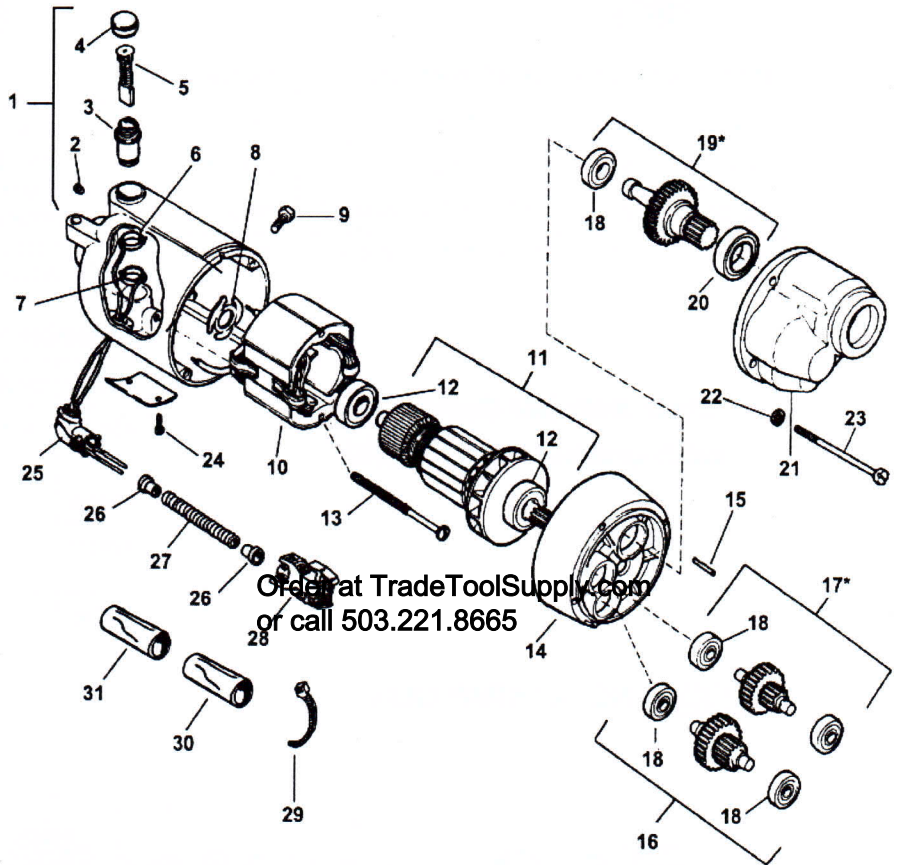


RIDGID 300/300A, 3177, 3277, 3181, 3281, 3158, 3258

| REF# | CAT# | DESCRIPTION |
|------|-----------|-------------------------------------|
| | 96810 | MOTOR 3181 (115V) |
| 1 | 43160 | HOUSING ASSEMBLY |
| 2 | 39770 | SET SCREW (2) |
| 3 | 45025 | BRUSH HOLDER SET |
| 4 | 44545 | BRUSH CAP SET |
| 5 | 44540 | BRUSH ASSEMBLY SET |
| 6 | 86680 | WHITE UPPER LEAD |
| 7 | 86685 | RED LOWER LEAD |
| 8 | 44580 | LOADING SPRING |
| 9 | 83500 | LOCKING SCREW (2) |
| 10 | 44015 | FIELD (115V) |
| 11 | 44010 | ARMATURE (115V) |
| 12 | 44565 | ARMATURE BEARING (2) |
| 13 | 44555 | MOUNTING SCREW (2) |
| 14 | 43165 | FAN HOUSING ASSEMBLY |
| 15 | 45165 | DOWEL PIN |
| 16 | SEE CHART | 1ST GEAR ASSEMBLY (300) |
| 17* | SEE CHART | 2ND GEAR ASSEMBLY |
| 18 | 45060 | GEAR BEARINGS (5) |
| 19* | SEE CHART | DRIVE GEAR |
| 20 | 45315 | FRONT BEARING |
| 21 | 42875 | GEAR HOUSING |
| 22 | 45150 | LOCK WASHER 1/4" (4) |
| 23 | 45075 | SCREW 1/4" - 20 (4) |
| 24 | 85920 | POP RIVETS (2) |
| 25 | 46900 | CONNECTOR 90 |
| 26 | 46890 | E-918 INSULATOR (2) |
| 27 | 47407 | FLEXIBLE CONDUIT |
| | 47412 | FLEXIBLE CONDUIT (3158/3258) |
| 28 | 50552 | PLUG |
| 29 | 64467 | CABLE TIE |
| 30 | 46880 | PLASTIC TUBE |
| 31 | 63377 | FERRITE BEAD |
| 32 | 97000 | 1ST GEAR ASSEMBLY (300A, 38/57 RPM) |
| | 97005 | 1ST GEAR ASSEMBLY (300A, 77 RPM) |
| | 97010 | 1ST GEAR ASSEMBLY (300A, 108 RPM) |



* FOR 300A: 2ND INTERMEDIATE OR DRIVE GEAR USE GEAR CHART

| MOTOR# | MODEL# | SPINDLE SPEED | REF# 16 1ST GEAR ASM. | REF# 17 2ND GEAR ASM. | REF# 19 DRIVE GEAR |
|--------|--------|---------------|-----------------------|-----------------------|--------------------|
| 87740 | 3177 | 38 STD. | CAT# 44985 | CAT# 45005 | CAT# 45370 |
| 87750 | 3177A | 57 | CAT# 44985 | CAT# 44990 | CAT# 45375 |

PLEASE USE CATALOG NUMBERS WHEN ORDERING



**TRADE TOOL
& SUPPLY
CORPORATION**

Phone: 503.221.8665 Fax: 503.223.0666 Email: sales@tradetoolsupply.com